

NEUTRAL

GREY
G30922
Grip
30X30 / 11.8X11.8"





NEUTRAL

COLOR



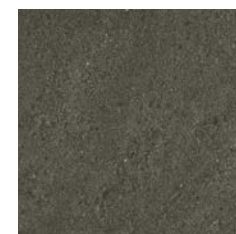
BEIGE
G30920
30X30CM
11.8X11.8"



MOCHA
G30921
30X30CM
11.8X11.8"



GREY
G30922
30X30CM
11.8X11.8"

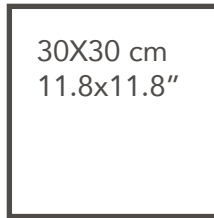


CHARCOAL
G30923
30X30CM
11.8X11.8"

GREY
G30922
Grip
30X30 / 11.8X11.8"

NEUTRAL

SIZE / FINISH



Grip



Grip



PRODUCT SPECIFICATIONS

COLOR SIZE FINISH		30x30 cm 11.8x11.8"	Regular
BEIGE	Grip	G30920	•
MOCHA	Grip	G30921	•
GREY	Grip	G30922	•
CHARCOAL	Grip	G30923	•

	Water Absorption (%)	Dimension (mm)		Thickness	Straightness of Sides	Central Warpage	Edge Curvature	Warpage	Rectangularity
		Length	Width						
EN14411 (ISO 13006)	≤ 0.5	± 1.8	± 1.8	± 0.4	± 1.5	± 1.5	± 1.5	± 1.5	± 1.5
30X30 CM 11.8X11.8"	≤ 0.5	± 1.2	± 1.2	± 0.4	± 1.0	+0.8~-0.4	+0.8~-0.4	± 1.0	± 1.0

	Breaking Strength Modulus of Rupture	Thermal Shock Resistance	Resistance to Chemical	Glazed Crack Resistance	Frost Resistance	Stain Resistance
	EN14411 (ISO 13006)	S≥1300N / R≥35N/mm ²	Test method available	Minimum GB	Resistant	Resistant
30X30 CM 11.8X11.8"	S≥1800N / R≥38N/mm ²	Resistant	Minimum GLA	Resistant	Resistant	Minimum class 4

PACKING LIST	Pcs Per M ²	Pcs Per Box	Weight Per Box	Boxes Per PLT
30X30 CM 11.8X11.8"	11.11	16	25	72