

MIXED STONE

The blend of Belgian bluestone, limestone, and gray limestone creates a slate tile ideal for landscape design and interior spaces, offering a visually rich and dynamic aesthetic.

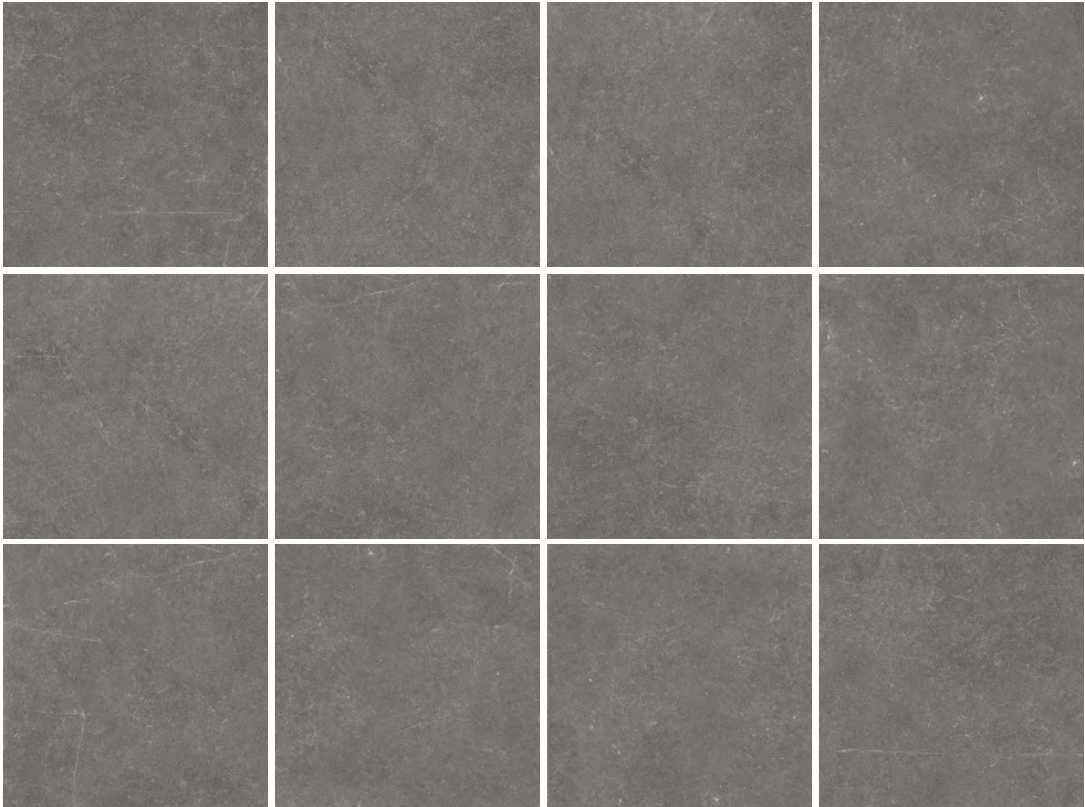


Mixed Stone

60x60cm / 23.6x23.6"

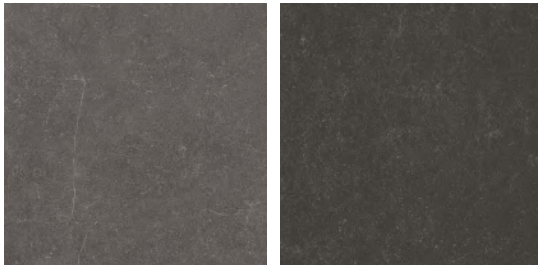
R10 P3 Natural

HD6F115 Light Grey

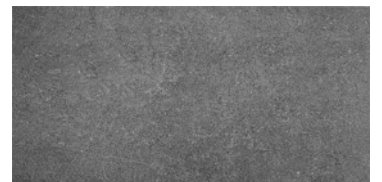


HD6F116 Dark Grey

HD6F117 Black



MORE IMAGES



Texture changes under light

Mixed Stone

60x60cm / 23.6x23.6"

R10 P3 Natural

HD6F115



Light Grey

45x90 cm / 17.7x47.2"

R10 P4 Natural

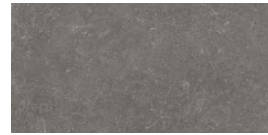
H49F115



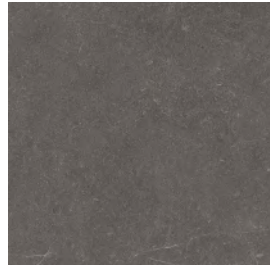
30x60cm / 11.8x23.6"

R10 Natural

HD3F115

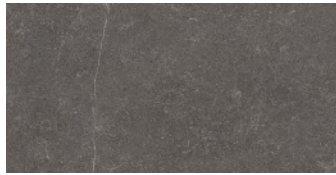


HD6F116

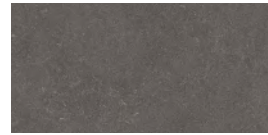


Dark Grey

H49F116



HD3F116

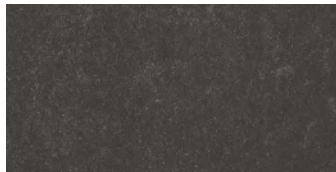


HD6F117

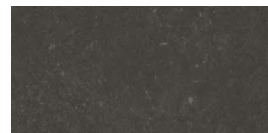


Black

H49F117



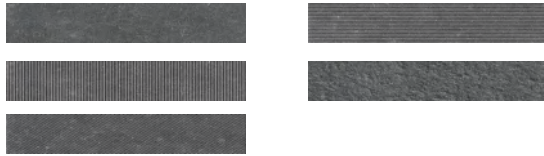
HD3F117



Mixed Stone

Mixed Stone Décor

6F115 7.5x30cm



Technical Specifications

PACKING LIST	Pcs Per M ²	Pcs Per Box	Weight Per Box	Boxes Per PLT
45x90 CM / 17.7x35.4"	2.47	2	18.54	60
60x60 CM / 23.6x23.6"	2.78	4	26.74	32
30x60 CM / 11.8x23.6"	5.56	9	28.8	32



Water Absorption(%)



Length (mm)



Width (mm)



Thickness (mm)



Surface Flatness (mm)



Abrasion Wear



Breaking Strength(N)

45x90 CM / 17.7x35.4"	≤ 0.5	± 0.4	± 0.4	± 0.4	+0.8~-0.2	Minimum class 3	S≥2200N / R≥38N/mm ²
60x60 CM / 23.6x23.6"	≤ 0.5	± 0.3	± 0.3	± 0.3	+0.6~-0.2	Minimum class 3	S≥2200N / R≥38N/mm ²
30x60 CM / 11.8x23.6"	≤ 0.5	± 0.3	± 0.3	± 0.3	+0.4~-0.2	Minimum class 3	S≥2200N / R≥38N/mm ²

