

WAVE GREY MOCA CREME

Derived from dense natural stone, this tile features smooth, refined textures with a calm and sophisticated appeal. Its neutral tones create a comfortable and elegant ambiance, perfectly complementing a modern, minimalist aesthetic. Ideal for both public and private spaces, it brings a sense of tranquility and timeless charm, enhancing any environment with a relaxed, slow-living atmosphere.



Wave Grey

60x60 cm / 23.6x23.6"

GD60125 Light Grey



GD60126 Grey

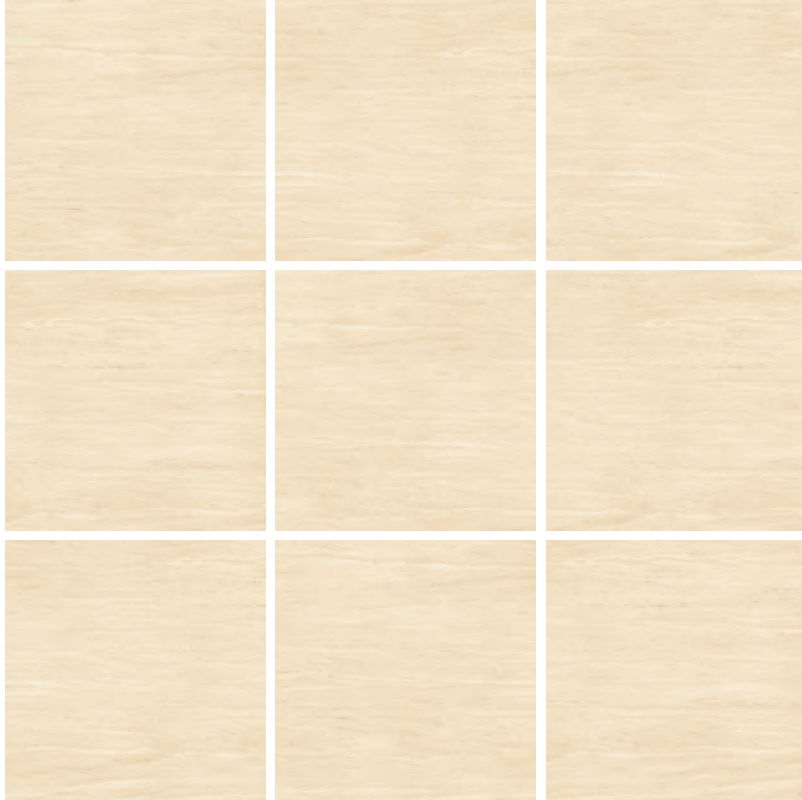


Texture changes under light

Moca Creme

60x60 cm / 23.6x23.6"

HD6F138 Light



HD6F139 Classic



Texture changes under light

Wave Grey

R10 P4 Natural

90x90 cm / 47.2x47.2"

GD90125



R10 P4 Natural

60x60 cm / 23.6x23.6"

GD60125



R11 P5 Grip

60x60 cm / 23.6x23.6"

GD60125H



R10 P4 Natural

30x60cm / 11.8x23.6"

GD63125



Light Grey

GD90126



GD60126



GD60126H



GD63126



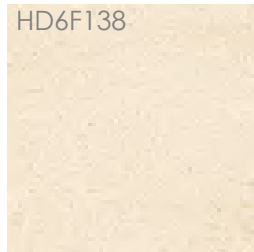
Grey

Moca Creme

R10 P4 Natural

60x60 cm / 23.6x23.6"

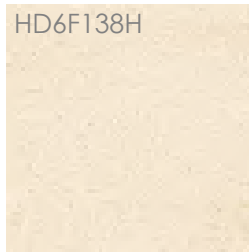
HD6F138



R11 P5 Grip

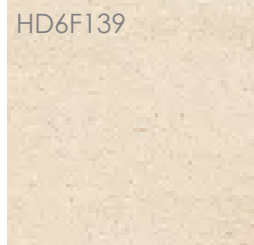
60x60 cm / 23.6x23.6"

HD6F138H

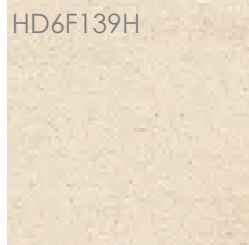


Light

HD6F139



HD6F139H



Classic



Moca Creme_HD6F138



Wave Grey_GD90125

Technical Specifications

Moca Creme / Wave Grey
90x90 / 60x60 / 30 x60 cm



Water Absorption(%)



Length (mm)



Width (mm)



Thickness (mm)



Surface Flatness (mm)



Abrasion Wear



Breaking Strength(N)

| | Water Absorption(%) | Length (mm) | Width (mm) | Thickness (mm) | Surface Flatness (mm) | Abrasion Wear | Breaking Strength(N) |
|-----------------------|---------------------|-------------|------------|----------------|-----------------------|-----------------|---------------------------------|
| 30x60 CM / 11.8x23.6" | ≤ 0.5 | ± 0.3 | ± 0.3 | ± 0.3 | +0.6~-0.2 | Minimum class 3 | S≥1800N / R≥38N/mm ² |
| 60x60 CM / 23.6x23.6" | ≤ 0.5 | ± 0.3 | ± 0.3 | ± 0.3 | +0.6~-0.2 | Minimum class 3 | S≥2200N / R≥38N/mm ² |
| 90x90 CM / 35.4x34.5" | ≤ 0.5 | ± 0.4 | ± 0.4 | ± 0.4 | +0.8~-0.3 | Minimum class 3 | S≥2200N / R≥38N/mm ² |

| PACKING LIST | Pcs Per M ² | Pcs Per Box | Weight Per Box | Boxes Per PLT |
|-----------------------|------------------------|-------------|----------------|---------------|
| 30x60 CM / 11.8x23.6" | 5.56 | 9 | 28.8 | 32 |
| 60x60 CM / 23.6x23.6" | 2.78 | 4 | 26.74 | 32 |
| 90x90 CM / 35.4x35.4" | 1.23 | 1 | 18.79 | 60 |

